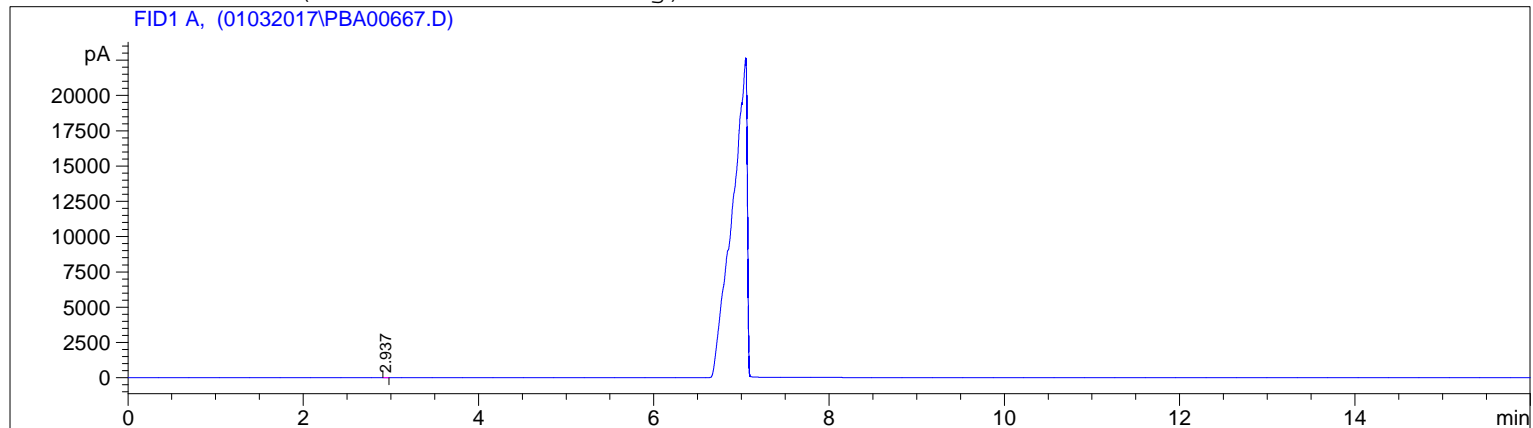


ALCOHOL DE GRANO
(01/03/17)

```

=====
Injection Date   : 3/1/2017 4:26:53 PM
Sample Name     : EMBARQUE                      Location  : Vial 1
Acq. Operator  : JENNY GOMEZ MACHORRO          Inj       : 1
Acq. Instrument : Instrument 1                  Inj Volume: 2 µl
Acq. Method    : C:\HPCHEM\1\METHODS\PRUFEB.M
Last changed   : 3/1/2017 2:34:27 PM by GERARDO SANCHEZ HERNANDEZ
                (modified after loading)
Analysis Method : C:\HPCHEM\1\METHODS\PRUFEB.M
Last changed   : 3/1/2017 5:02:40 PM by JENNY GOMEZ MACHORRO
                (modified after loading)
=====

```



```

=====
External Standard Report
=====

```

```

Sorted By           : Signal
Calib. Data Modified : 3/1/2017 5:02:09 PM
Multiplier          : 0.9580
Dilution            : 1.0000
Sample Amount       : 1.00000 [mg/100ml] (not used in calc.)
Use Multiplier & Dilution Factor with ISTDs

```

Signal 1: FID1 A,

RetTime [min]	Type	Area [pA*s]	Amt/Area	Amount [mg/100ml]	Grp	Name
2.680	-	-	-	-	-	ACETALDEHIDO
5.780	-	-	-	-	-	ACETATO DE ETILO
6.100	-	-	-	-	-	METANOL
8.628	-	-	-	-	-	SEC-BUTANOL
8.957	-	-	-	-	-	N-PROPANOL
10.065	-	-	-	-	-	ISO-BUTANOL
12.423	-	-	-	-	-	ISO-AMILICO
13.036	-	-	-	-	-	N-AMILICO
14.114	-	-	-	-	-	LACTATO DE ETILO
15.306	-	-	-	-	-	FURFURAL

Totals : 0.00000

Results obtained with enhanced integrator!

1 Warnings or Errors :

Warning : Calibrated compound(s) not found

=====
Area Percent Report
=====

Sorted By : Signal
Calib. Data Modified : 3/1/2017 5:02:09 PM
Multiplier : 0.9580
Dilution : 1.0000
Sample Amount : 1.00000 [mg/100ml] (not used in calc.)
Use Multiplier & Dilution Factor with ISTDs

Signal 1: FID1 A,

Peak #	RetTime [min]	Type	Width [min]	Area [pA*s]	Area %	Name
1	2.680		0.0000	0.00000	0.00000	ACETALDEHIDO
2	2.937	PP	0.0193	1.70271e-1	95.80000	?
3	5.780		0.0000	0.00000	0.00000	ACETATO DE ETILO
4	6.100		0.0000	0.00000	0.00000	METANOL
5	8.628		0.0000	0.00000	0.00000	SEC-BUTANOL
6	8.957		0.0000	0.00000	0.00000	N-PROPANOL
7	10.065		0.0000	0.00000	0.00000	ISO-BUTANOL
8	12.423		0.0000	0.00000	0.00000	ISO-AMILICO
9	13.036		0.0000	0.00000	0.00000	N-AMILICO
10	14.114		0.0000	0.00000	0.00000	LACTATO DE ETILO
11	15.306		0.0000	0.00000	0.00000	FURFURAL

Totals : 1.70271e-1

Results obtained with enhanced integrator!

1 Warnings or Errors :

Warning : Calibrated compound(s) not found

=====
*** End of Report ***
=====